

IF-BC

Infrared BiChromatic temperature sensor emissivity insensitive for harsh environments

IF-BC SN: I#####

Paired Fiber SN: I#####

Texense sensors are designed for data logging. Should the users want to include this sensor in a closed loop system, they must undertake total responsibility from doing so.

| Measurements features | | |
|---------------------------------------|---------------------------|-------|
| Sampling Frequency | 20 | Hz |
| Accuracy ⁽¹⁾ | See accuracy table | %FS |
| Sensitivity | 5.714 | mV/°C |
| Analogic Output (100-800°C) | 0.5 to 4.5 | V |
| Response time | 50 | ms |
| Temperature range ⁽²⁾ | 110 to 800 | °C |
| Emissivity range | 0.1 to 0.99 | |
| Field of view | 25 | ° |
| Measurement distance ⁽³⁾ | 5 to 50 | mm |
| Short using radius fiber | 50 | mm |
| Wavelength | 0.9 to 2.6 | µm |
| Calibrators | Land P550P / Dias 1500 CS | |
| Electrical features | | |
| Supply Voltage | 6 to 30 | V |
| Supply current | 16 | mA |
| Output impedance | 47 | Ω |
| Mechanical features | | |
| SMA nominal torque | 1 | Nm |
| Housing dimension (without connector) | 22.4 x 25 x 11 | mm |
| Material | Aluminum | |
| Weight (without cable nor fiber) | 13 | g |
| Environmental features | | |
| Box protection | IP63 | |
| Vibrations | 20Gpp5' | |
| Shocks | 500 | G |
| Operating Temperature | -40 to +80 | °C |
| Storage Temperature | -55 to +125 | °C |

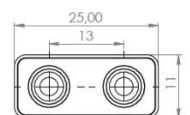
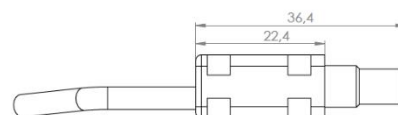
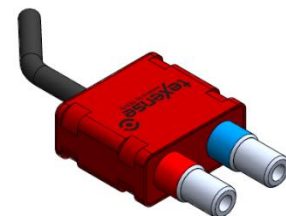
- (1) To ensure a correct temperature measurement, the installation of the sensor must prevent ambient light (from the sun or lamps) to penetrate in the field of view of the sensing head.
- (2) Correct only for an emissivity of 0.98. Lower emissivity may reduce the temperature range.
- (3) Measurement distance should be specified at order in order to be used for calibration and ensure correct temperature measurement. Also, shorter distances reduce the risk of ambient light.

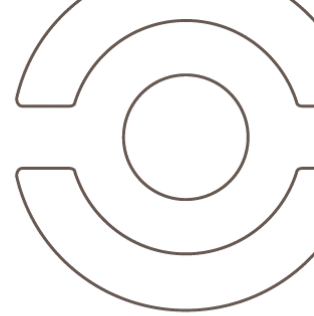
| | | | |
|-------------|-----------|----------|--|
| Date | | Operator | |
| Customer | | | |
| Order | | | |
| Product Ref | IF-BC-800 | | |
| SW version | | | |

| Sensor Readings | |
|--------------------|-----------------------|
| Target Temperature | Output Voltage Signal |
| ...°C | ...V |
| ...°C | ...V |

| Cable | | |
|---|----------------------------|--------------|
| 4x26 AWG FEP tinned copper braided cable 250V 200°C | | |
| Length: 1000mm±100mm | | Tubing: 50mm |
| Connector: on request | | |
| Color | Function | pin |
| Red | Supply input | - |
| Black | 0V | - |
| White | Signal | - |
| Green | Do not connect and isolate | - |
| Braid | | |

| Bichromatic Mode | |
|------------------|--------------------------|
| Emissivity | Minimum temperature (°C) |
| 1 | 110 |
| 0.75 | 120 |
| 0.5 | 130 |
| 0.25 | 140 |



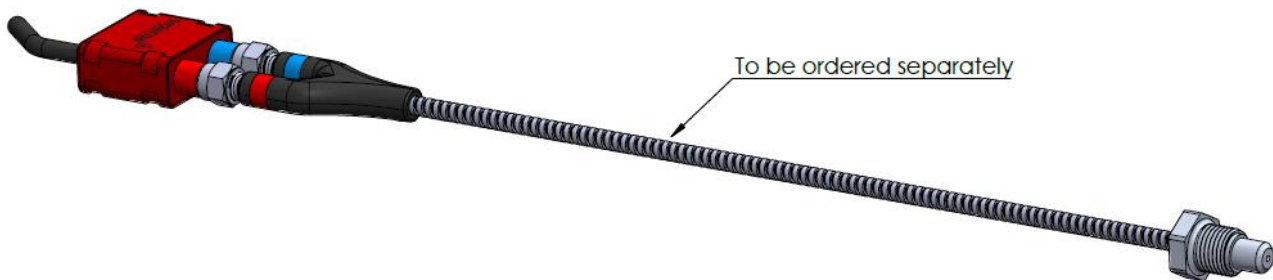


Accuracy table

| Accuracy table (%FS) | | | | | |
|----------------------|--------------------|----------------------------|--------------------|--------------------|--------------------|
| Emissivity | Target Temperature | Sensor Ambient temperature | | | |
| | | 25 °C | 40 °C | 60 °C | 80 °C |
| 1 | 160 | 0.5 ⁽⁴⁾ | 0.5 ⁽⁴⁾ | 0.5 ⁽⁴⁾ | 1.5 ⁽⁴⁾ |
| 0.75 | | 0.5 ⁽⁴⁾ | 0.5 ⁽⁴⁾ | 0.5 ⁽⁴⁾ | 1.5 ⁽⁴⁾ |
| 0.5 | | 0.5 ⁽⁴⁾ | 0.5 ⁽⁴⁾ | 0.5 ⁽⁴⁾ | 2 ⁽⁴⁾ |
| 0.25 | | 0.5 ⁽⁴⁾ | 0.5 ⁽⁴⁾ | 1 ⁽⁴⁾ | 3.5 ⁽⁴⁾ |
| 1 | 300 | 0.5 | 1.5 | 2 | 2 |
| 0.75 | | 0.5 | 1.5 | 2 | 2 |
| 0.5 | | 0.5 | 1.5 | 2 | 2 |
| 0.25 | | 0.5 | 1.5 | 3 | 3 |
| 1 | 550 | 0.5 | 3.5 | 3.5 | 3.5 |
| 0.75 | | 0.5 | 3.5 | 3.5 | 3.5 |
| 0.5 | | 0.5 | 3.5 | 3.5 | 3.5 |
| 0.25 | | 0.5 | 3.5 | 4 | 4 |
| 1 | 800 | 0.5 | 4 | 4 | 4 |
| 0.75 | | 0.5 | 4 | 4 | 4 |
| 0.5 | | 0.5 | 4 | 4 | 4 |
| 0.25 | | 0.5 | 4 | 4 | 4 |

(4) Data valid once a temperature measurement above 260°C has been performed on the same object

Fibre connection



Ordering information

| |
|--|
| <p>Ordering ref:</p> <p style="text-align: center;">IF-BC-Range</p> <p style="text-align: center;">800: 110...800°C range</p> <p style="text-align: right;">ex: IF-BC-800</p> |
|--|