



Setup for A-CAN DG dongle		
Identifiers	Tx1	
	Tx2	NA
	Tx3	NA
	Rx	
Baud rate		bps
Frequency		Hz

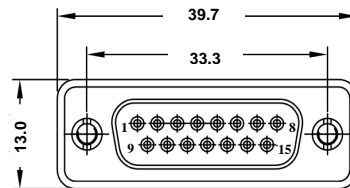
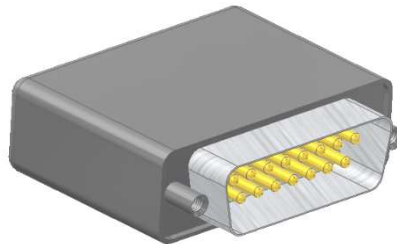
A-CAN-DG-V1-A	
Analog to CAN Converter	
4 Analog	
SN:	Software version:

Texys sensors are designed for data recording. If the user wants to include this sensor in a close loop system or active control, he must assume all responsibility.

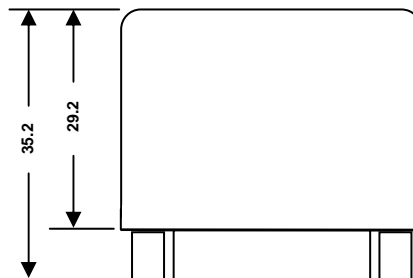
Analog Inputs	Range	0 to 5	Volts
	16 bits Resolution	0.076	mV/bit
	Input impedance	10	kΩ
	Pull up to 5V	1	MΩ
	Sampling (per channel)	500	Hz
Digital Inputs	NC		
Wheel Speed	NC		
Engine Revs	NC		
CAN bus2.0A	120Ω : <input type="checkbox"/> yes <input type="checkbox"/> no		
Output Data	16 bits per channel		
Parameters	Identifiers, Baud rate, Frequency		
Baud rate	125k to 1Mbps		
Frequency	1Hz to 200Hz, request mode		
Supply Voltage	6 to 16	V	
Supply Current	25	mA	
Dimensions	26x19x7	mm	
Material	FR4 + resin		
Weight	5	g	
Protection	no		
Vibration test	20Gpp 5'		
Shock	500	G	
Operating Temp	-20 to +80	°C	
Storage Temp	-40 to +80	°C	

Connector : D-Sub 15M

Function	Description	Pin
Analog Inputs	Channel 1	1
	Channel 2	2
	Channel 3	3
	Channel 4	4
	Channel 5	NC
	Channel 6	NC
	Channel 7	NC
	Channel 8	NC
Supply	Supply (6 to 16 V)	9
	0V (GND)	10
	Shield	11
CAN	CAN HIGH	12
	CAN LOW	13
Digital Inputs	Engine Speed	NC
	Wheel Speed	NC



Front view



Data output

ID	Byte 0	Byte 1	Byte 2	Byte 3	Byte 4	Byte 5	Byte 6	Byte 7
#1 0x03F0	ANA 1		ANA 2		ANA 3		ANA 4	

Changing parameters

The device parameters can be modified using the CAN protocol Texys.

CAN parameters:

N°	Parameter	Raw values	values	Comments	
0x00	Baudrate	0x00	1000 Kbps	default	
		0x01	500 Kbps		
		0x02	250 Kbps		
		0x03	125 Kbps		
0x01	Emission frequency	0x00	Rx frame trig	Request mode - 100Hz max. default	
		0x01	1 Hz		
		0x02	5 Hz		
		0x03	10 Hz		
		0x04	50 Hz		
		0x05	100 Hz		
		0x06	200 Hz		
0x02	Rx frame ID	0 to 0x07	0 to 0x07F0	MSB of triggering frame ID	Default 0x07F0
0x03		0 to 0xFF		LSB of triggering frame ID	
0x04	Tx1 frame ID	0 to 0x07	0 to 0x07F0	MSB of data frame 1 ID	Default 0x03F0
0x05		0 to 0xFF		LSB of data frame 1 ID	

For complete information, contact us at info@texense.com